



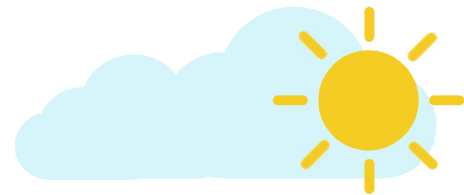
**OhioRISE is a new program in Ohio designed to help young people with significant behavioral health issues succeed in their schools, homes, and communities.**



**If behavioral health challenges are making life feel unmanageable...**

OhioRISE serves young people who are dealing with behavioral health challenges. These children/youth may need extra support and could be at risk for out-of-home placement or deeper system involvement due to:

- Mental health needs.
- Substance use challenges.
- Autism or other developmental disabilities.
- Juvenile court involvement.
- Situations that lead to child protective services involvement.
- Difficulty with peer and/or family relationships.
- Problems at school.



**And you need help creating a care plan that helps build long-term success...**

OhioRISE does just that. OhioRISE provides support for behavioral health concerns through “care coordination.” That means that an OhioRISE enrollee and their caregiver/family are paired with a care coordinator who helps them make life feel more manageable by:

- Working with the child/youth and their caregiver/family to create a care plan that is built around their unique needs, strengths, and culture.
- Forming a care team that works together to focus on the voice and choice of the child/youth and their caregiver/family.
- Connecting a child/youth to local treatment services and resources. Serving as an advocate for the young person and their caregiver/family to ensure their needs are met.

**Who qualifies for OhioRISE?**

Young people, ages 0-20, who are eligible for Medicaid and require significant behavioral health treatment, as measured by the Ohio Child and Adolescent Needs and Strengths Assessment (CANS).

Children/youth may also be eligible because of certain urgent conditions. For example, if a child/youth is in a hospital for behavioral health reasons.

**What is a CANS assessment?**

The CANS assessment is a tool used to determine eligibility for OhioRISE. It also:

- Gathers the young person and their caregiver/family’s story to understand their needs and strengths.
- Guides the best ways to provide support.
- Assists with ongoing care planning.
- The CANS assessment is updated regularly to make sure the child/youth’s needs are being met.

## What does OhioRISE cover?

The program provides new and improved behavioral health services including:

- Intensive in-home and crisis services.
- Outpatient services, such as individual and group counseling, family therapy, and day treatment.
- Inpatient mental health and substance use care at hospitals.
- Behavioral health respite, which is temporary relief for a child/youth's caregivers.
- Primary flex funds, which is funding for services or items to help address a need in a young person's care plan.

OhioRISE does not cover physical health services such as visits to a doctor's office, dental care, immunizations, and services for autism, including applied behavioral analysis (ABA). Young people enrolled in OhioRISE will receive their physical services through a managed care organization or fee-for-service Medicaid.

For more information about OhioRISE services, visit: [managedcare.medicaid.ohio.gov/OhioRISE\\_Services](https://managedcare.medicaid.ohio.gov/OhioRISE_Services)

## What to expect from a CME

Care management entities (CME) are local organizations across Ohio that complete CANS assessments and provide care coordination to many of the youth people enrolled in OhioRISE. CMEs also:

- Have regular communication with OhioRISE enrollees and their caregivers/families to make sure they are getting the help they need and deserve.
- Partner with enrollees and their caregivers/families to review what is working, what is not, and what to try next.
- Work with community organizations to see what other services and supports are available for the enrollee and their caregiver/family.
- Offers 24/7 crisis support so enrollees and their caregivers/families are never alone.
- Advocates for enrollees and their caregivers/families with schools, juvenile courts, behavioral health providers, and others, to ensure their voices are heard and their needs are met.

CareStar is a CME for OhioRISE that services Butler, Warren and Clinton Counties.

## Next steps

**CareStar can help with questions and next steps, including determining if a young person is eligible for OhioRISE. Contact us at 1-800-616-3718**

**or email [CANS@CareStar.com](mailto:CANS@CareStar.com) for more information!**

**You can also contact Aetna Better Health of Ohio directly at 833-711-0773 (TTY: 711).**

CareStar ensures equal opportunity in accordance with all applicable Federal, State and Local regulations and guidelines. Discrimination due an individual's existence in a Federal, State or Local protected class is illegal.

If you need assistance, CareStar can provide language and interpretation services, auxiliary aids, etc., at no cost to the individual.